

Workshelf™

Open Plan + Private Office

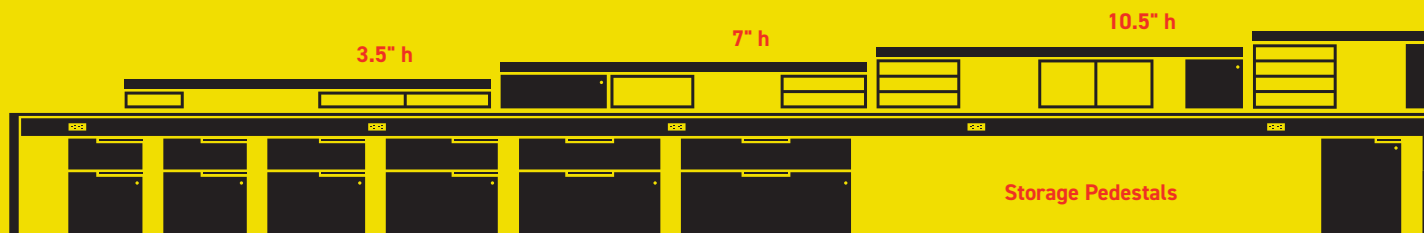


three h

Workshelf™

A collection of components that can be arranged to suit any scale and any type of space, be it private or open spaces. At the heart of the concept is the ability to organize the modules to your individual and personal taste. You can create a space that really represents you. Workshelf has taken a new turn in office furniture, offering a system of varied height and width components to achieve asymmetrical architecture. Combine all four heights – at 3.5 inch increments – within 2 inch shelves that can be cantilevered and you can see how extensive the configurations can be. Solid wood crafted legs, in wood finish or solid color are complimented by a sculpted leg frame and covered with a choice of four elegant worksurface shapes.

Powershell, which is the spine of the system, adds power and connectivity within arms-length of anywhere you may be sitting. With the finish options available from high-gloss acrylics, solid wood, metal and HPL color accent laminates, it gives you the creative freedom to express a personalized environment. The design language is simple, yet aesthetically sophisticated.



DESIGN



Jean Bourassa

Multiple Best Of NeoCon award-winning designer and team leader, Jean Bourassa, brought the genesis of new thinking in future of the office to reality. Jean specifically took on the challenge of creating Powershelf™: the central steel shelf support that carries power/data, and provides for direct user connectivity access at multiple arms-length locations.



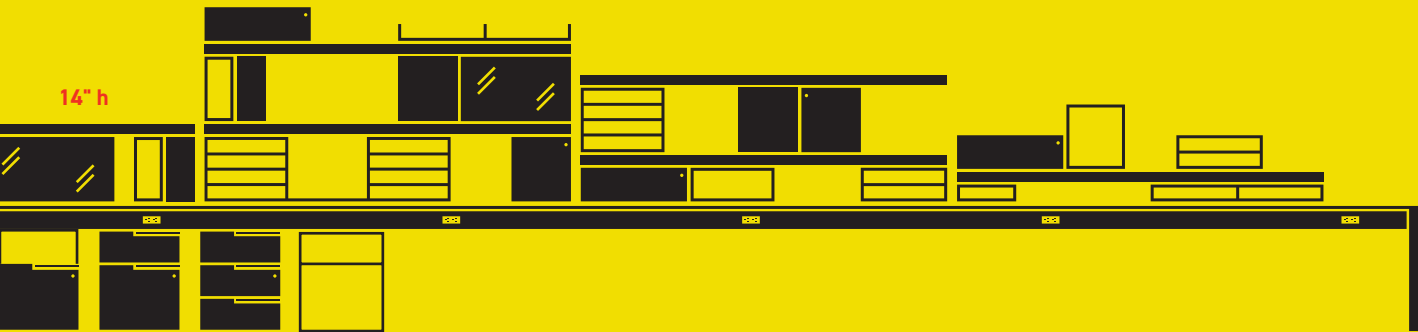
Mark Muller

Mark's international level of experience in office furniture was a perfect fit with Three H's brand philosophy of bringing craft ideas to the contract furniture marketplace. While creating an overall systematized approach to Workshelf, Mark focused on the design of the unique leg, steel understructure, and complimentary hardware.



Alin Copil

Graphic/Visual expert, Alin Copil, brought guidance on the approach in colors, shapes, textures and arrangements. The goal to heighten the level of employees diverse needs and comfort level; and creating inspiring environments for personalized work spaces in a variety of unique functions and styles.



Workshelf™ Shared Workspace

Workshelf is a desking system that spans the open plan and private office with the clean lines of benching and the privacy and storage options of a panel system.

The design team extended the notion of working with a primary power-beam by building creative storage and open access components within additional shelving above the core beam. The stacking and layering of Workshelf individual and shared storage modules within the two-inch shelves is a signature element of the product line.

The cantilever and open asymmetrical shelves offer freedom to place items and objects in an orderly but creative fashion. Workshelf storage includes: cabinetry with lock options is a personal spot to secure laptops, mobile devices, tablets etc.; storage cabinets can be arranged in a shared fashion with the option of four new colorful acrylic fascia; book and binder slots offer arms reach flexibility; paper trays are a nod to the in-out baskets of traditional offices and smoked acrylic privacy dividers offer a handsome design touch.

Each feature has been developed within a set of standardized components making it easy to specify. The ability to arrange them in various and shared configurations make it highly personalized and uniquely functional for a variety of work tasks. The result is an architecturally engaging workplace that adapts to the ever-evolving needs of individuals.

Powershelf™ became the object of new thinking and innovation. The proprietary design is discreet and elegantly simple with power/data at multiple and expected locations. The functionality is impressive, with power access for the user directly into the sides or top of Powershelf and extending out to the worksurfaces as well.





378939



378938

ABOVE

Two Person Office for Open Plan or Private Office

Featuring movable worksurface for instant change in user position direction (without modesty only)

LEFT

Four Person Open Plan

See page 8 for power/data location options

Solid Wood Leg

Available in 6 wood stains and 3 solid colors



Workshelf™ Private Space

The solid wood leg is built on the Three H tradition of hand crafted solid wood detailing. The angular steel support structure is multi-functional for desking and tables and was also styled to compliment the progressive aesthetics of the furniture. Together with the knife edge organic shaped tops, Workshelf is that rareness in design and quality that is immediately recognizable.





LEFT
Formal and Sophisticated Private Office
 Showcasing table desk option and
 Rescape Wall Tile Office

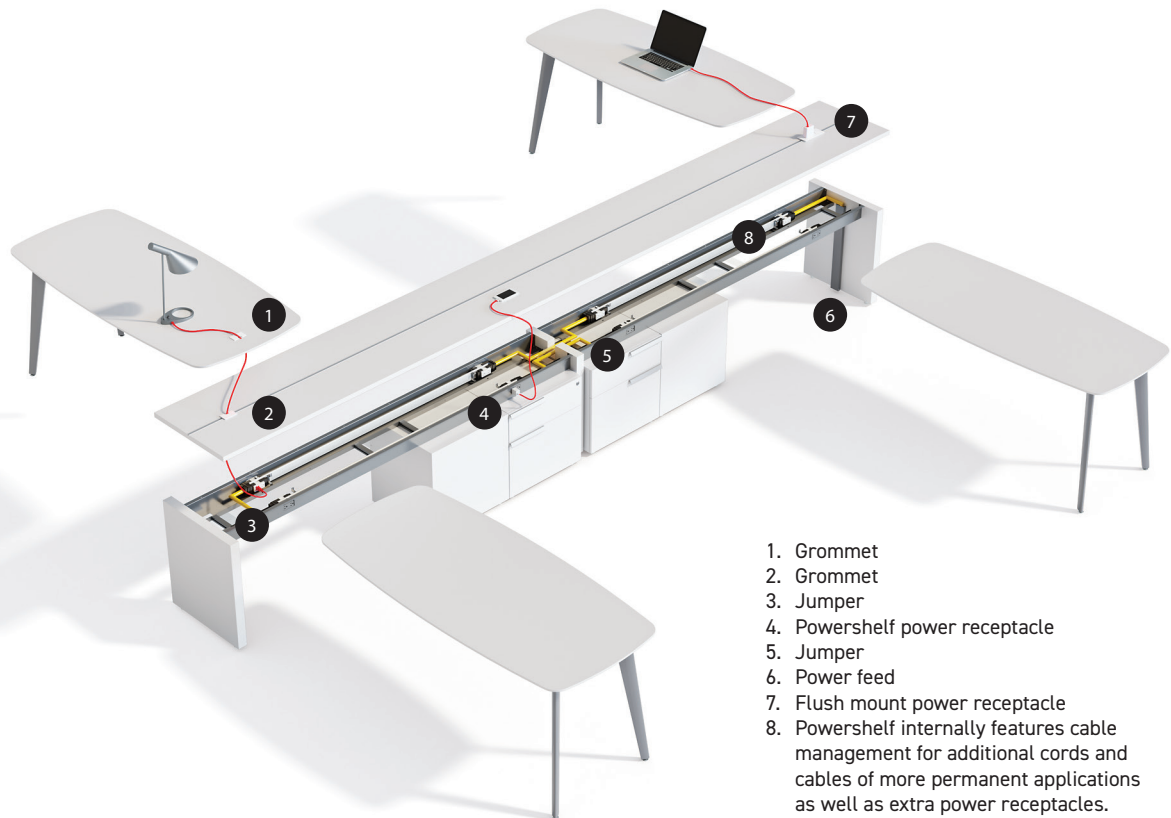


ABOVE
Flexible Private Office
 Featuring movable worksurface and matching
 pulls made for Workshelf

LEFT
Meeting-oriented Private Office
 Featuring push latch high-gloss acrylic fronts

Powershelf™ Power/Data

Visit three-h.com/workshelf for video animation demo of Powershelf and Workshelf construction



1. Grommet
2. Grommet
3. Jumper
4. Powershelf power receptacle
5. Jumper
6. Power feed
7. Flush mount power receptacle
8. Powershelf internally features cable management for additional cords and cables of more permanent applications as well as extra power receptacles.

Workshelf™ Finishes



1. Wood Leg Stains

Clear Coat
Stream Walnut
Autumn Cherry
Nightfall Cocoa
Mahogany
Tuxedo

2. Leg Frame & Corner



3. Powershelf Beam & Receptacles



Wood Leg Paints



White



Grey



Black

4. Pulls



5. Laminates (29 Finishes)

Acrylic High Gloss Doors



White

Grey

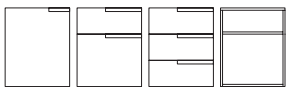
Red

Workshelf™ Component Assembly

1. Worksurface
2. Legs
3. Support frame
4. Under powershelf storage
5. Powershelf
6. Middle stackers
7. Shelf (with top and bottom groove)
8. Middle stackers
9. Shelf (with top and bottom groove)
10. Top stacker
11. Acrylic partition



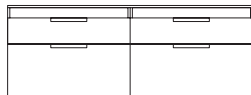
Workshelf™ Storage Options



Under Powershelf Storage

Height – 21"
(fits under Powershelf)
Width – 16" (Letter), 19" (Legal),
21", 24", 30", 36"

Depth – 19"
Drawers: Left & Right pull position
for 18", 21", 24" only
Center Pull option for all widths
Doors: Small pull



Low Storage

Height – 25.5"
(same height as Powershelf)
Width – 42", 48", 54", 60", 66", 72"

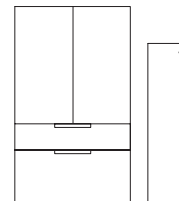
Depth – 21"
Drawers: Left & Right pull position
for 42", 48" only
Center Pull option for all widths
Doors: Small pull



Low Storage

Height – 25.5"
Width – 16" (Letter), 19" (Legal),
21", 24", 30", 36"

Depth – 21"
Drawers: Left & Right pull position
for 18", 21", 24" only
Center Pull option for all widths
Doors: Small pull



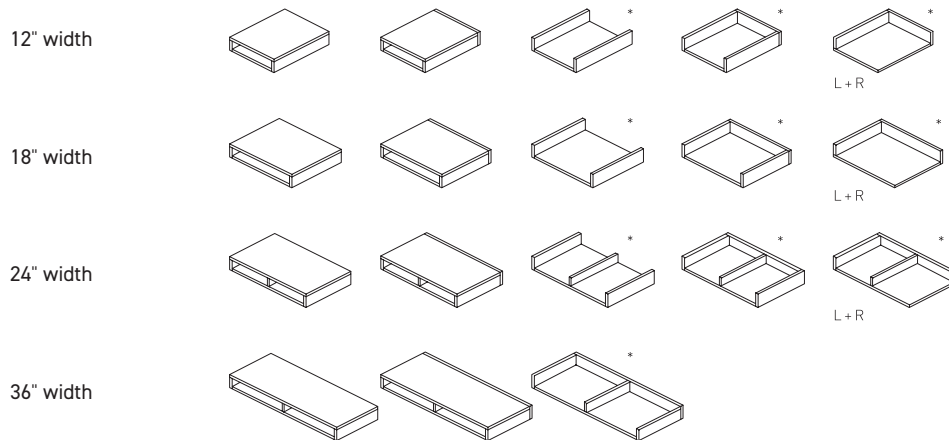
Tall Storage

Heights – 43", 57", 64", 71", 78", 85"
Widths – 18", 21", 24", 30", 36"

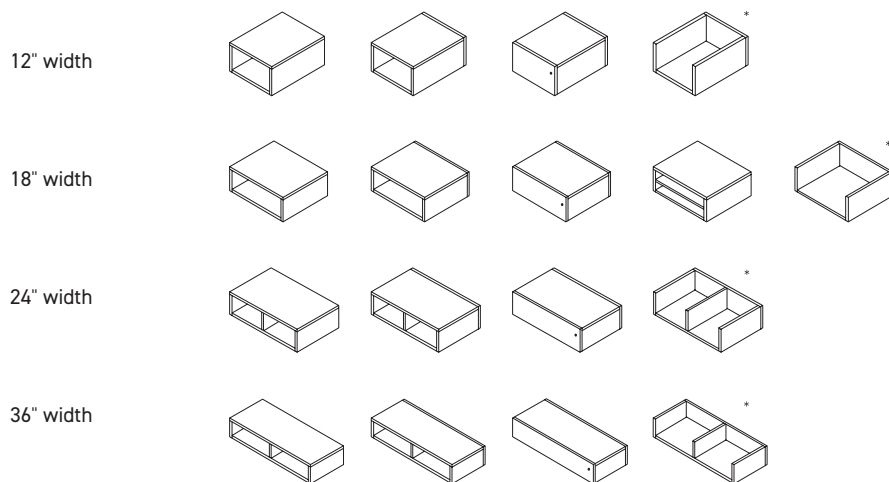
Depth – 15", 21"
Drawers: Left & Right pull position
for 18", 21", 24" only
Center pull option for all widths
Doors: Small pull
12" & 18" wide in single and
double sided wardrobe
Full door or open

Surface Storage Boxes

3.5 inch height / 15 inch depth

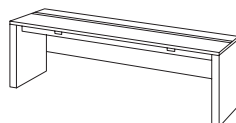


7 inch height / 15 inch depth



Powershelf – Double Side

Height – 25.5"
Depth – 21"
Length – 48" to 96"
With or without extrusion
Grommet or face up modules
With or without center extrusion
to receive storage centered



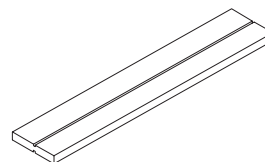
Powershelf – Single Side

Height – 25.5"
Depth – 21"
Length – 48" to 96"
With or without extrusion
Half or full modesty options
Grommet or face up modules
With or without center
extrusion to receive storage
flush with back edge



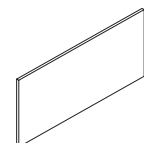
Return

Height – 25.5"
Depth – 21"
Length – Max 72"
Left & Right, half or
full modesty panel
Grommet or face up modules
With or without center
extrusion to receive storage
flush with back edge



Platform Shelf

Height – 2"
Depth – 15"
Width – 42, 48, 54, 60, 66, 72, 78, 84"
One or two side aluminum extrusion



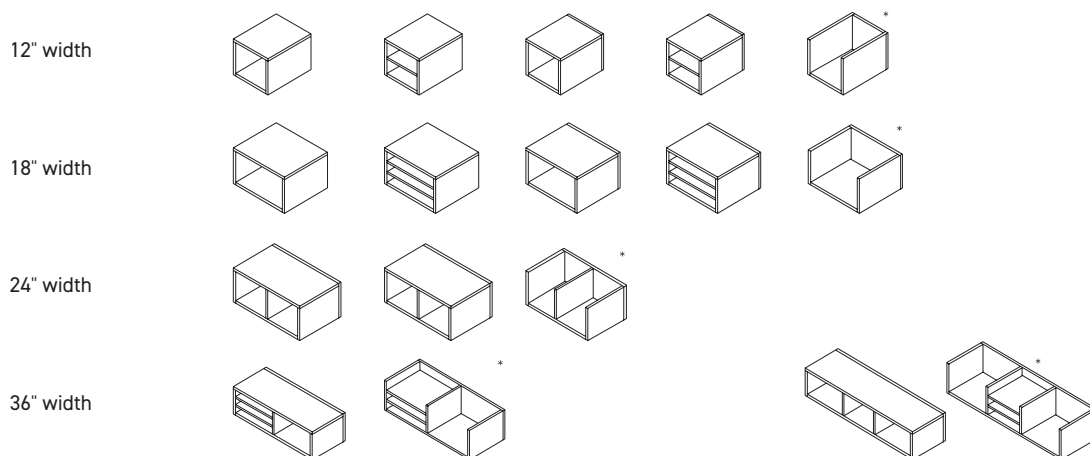
Acrylic Partition

Height – 8" & 15"
Thickness – 1/4"
Width – 18, 24, 30, 36, 42, 48, 54, 60"
Finish – Clear, frosted & smoke

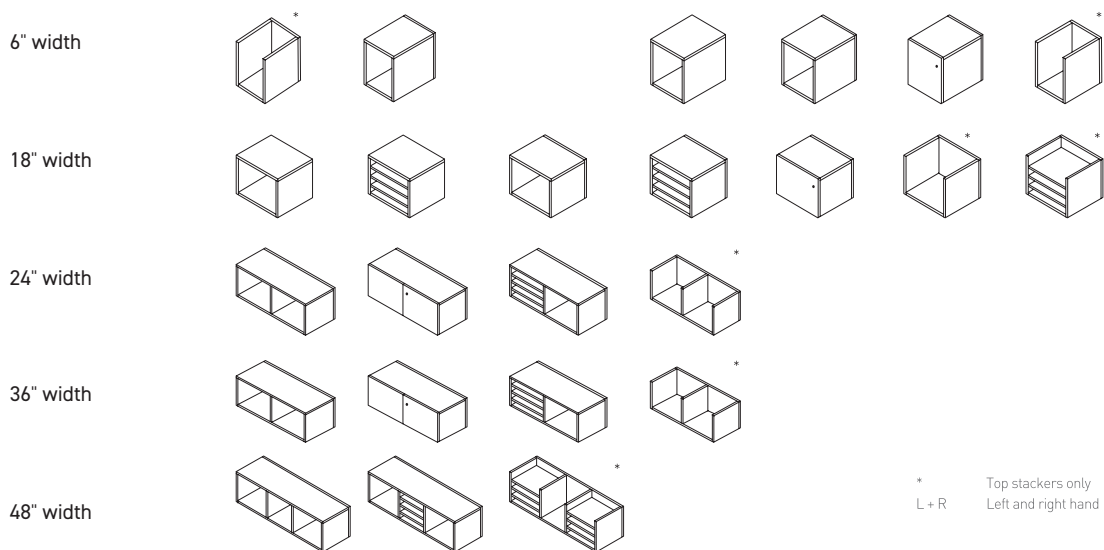
Workshelf™ Component Assembly

Surface Storage Boxes

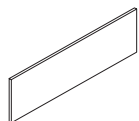
10.5 inch height / 15 inch depth



14 inch height / 15 inch depth



* Top stackers only
L + R Left and right hand



Modesty Panel

Height – 10.5"
Laminate or fabric
For freestanding
and run off tables
Laminate or accent
color available



Rectangle Worksurface

48"x 24" 66"x 30" 66"x 36"
54"x 24" 72"x 30" 72"x 36"
60"x 24" 78"x 30" 78"x 36"
66"x 24" 84"x 36"
72"x 24"



Boat Worksurface

66"x 30" 66"x 36"
72"x 30" 72"x 36"
78"x 30" 78"x 36"
84"x 36"



Tapered Worksurface

66"x 36/24" 66"x 42/30"
72"x 36/24" 72"x 42/30"
78"x 36/24" 78"x 42/30"
84"x 36/24" 84"x 42/30"



Wing Worksurface

72"x 39/24"
78"x 41/24"
84"x 42/24"



Wing Worksurface

72"x 39/24"
78"x 41/24"
84"x 42/24"

Creating a Furniture Future

three-h.com/workshelf



378937 /
Front and back cover
shown in a double sided application (Double sided Powershelf)

Developed and Manufactured in North America

Printed in Canada. / **WS10-16**
©2016 Three H Furniture Systems Limited. All rights reserved

Images shown are representative of finishes
and are not to be used as actual samples.

three h

T 1.800.767.5374 www.three-h.com



Mixed Sources
Cert no. SW-COC-001731
© 1996.FSC