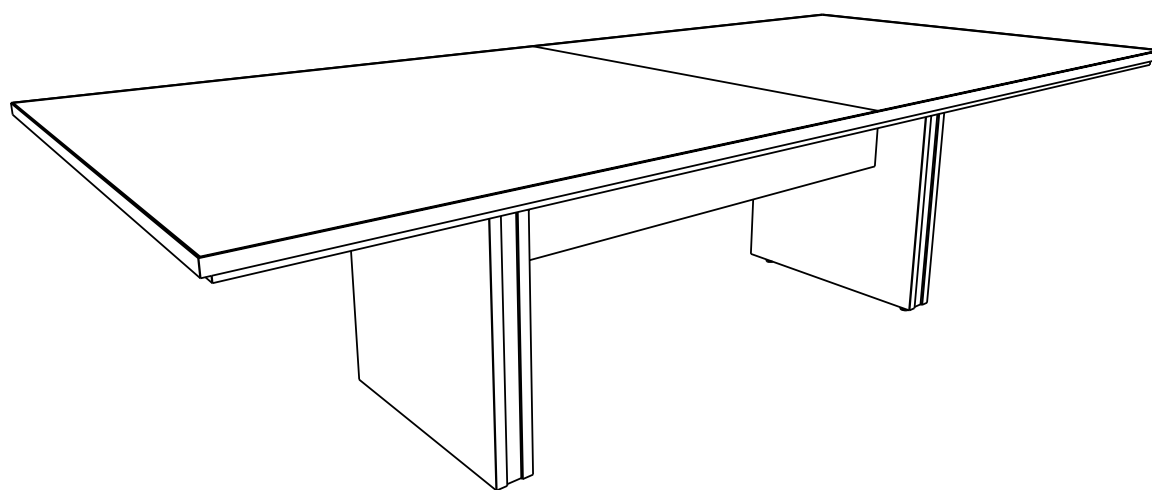






UNITE CONFERENCE

INSTRUCTIONS



three h

INCLUDED HARDWARE

<div><div>A</div><div>UroScrew</div><div></div></div>	<div><div>B</div><div>Panhead Screw</div><div></div></div>	<div><div>C</div><div>Fast Cap Screw</div><div></div></div>	<div><div>D</div><div>VB Connector</div><div></div></div>
---	---	---	--

PIECES

<div><div>Top/ Surface</div><div></div></div>	<div><div>Leg/ Base</div><div></div></div>	<div><div>Modesty Panel</div><div></div></div>
--	--	---

REQUIRED TOOLS

<div><div>Power Drill</div><div></div></div>	<div><div>Phillips Screwdriver </div><div></div></div>	<div><div>Robertson Screwdriver </div><div></div></div>
---	--	---

ATTENTION:

Failure to follow instructions may result in damage to the furniture. Damage to furniture that occurs on site will not be replaced by Three H Furniture.

NOTE: These guidelines are generic to the Unite Tables. Some differences in parts will be noticeable, this is a guide only.



STEP ONE

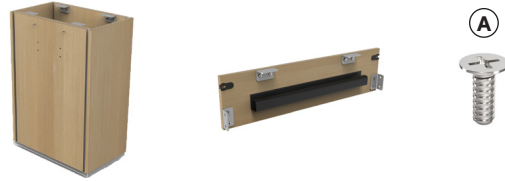


Start with 1 Leg and 1 Modesty panel.

Align the pre-drilled holes with the appropriate hardware holes.

Tighten the pre-installed VB Connector onto the VB Pin, turn clockwise.

STEP TWO



Use 2 UroScrews to fasten the 90° L Brackets into the pre-drilled holes.

Repeat Steps One and Two for the second Modesty Panel and attach the second leg

STEP THREE



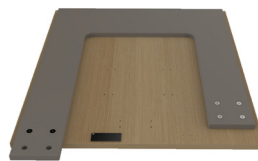
Without the weight of the Top/ Surface, check to see the level status.

STEP FOUR



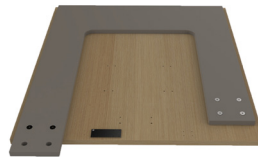
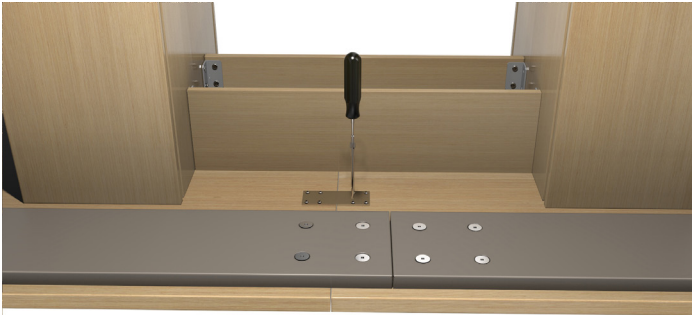
If the bases are not level, you can access the Levelers through the Base Access Door. Turn the adjustable Levelers till it is level on all corners.

STEP FIVE



Place one Top piece in position on top of the Legs and Modesty.
The second Top piece has to slide into place. Slide it in carefully to avoid damaging the tops.

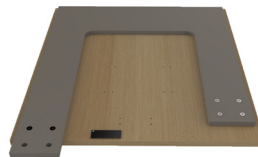
STEP SIX



You will now have to work UNDERNEATH the table.

Rotate the Mending Plate into place over top of the pre-drilled holes.
Use the No.8 Panhead Screws (B) to fasten the Mending Plate.

STEP SEVEN



Use Fast Cap Screws (C) in pre-drilled holes to attach the tops together.
6 Fast Cap Screws will already be pre-installed.

STEP EIGHT



Using UroScrews, attach all the 90° L Brackets from the Modesty to the pre-drilled holes on the top.

Use the Base Access Door to attach those 90° L Brackets.

Need Help?

customer.service@three-h.com | 1.800.767.5374

three h